

PANDÖRA

NECKLACE HOW TO GUIDE

HOW TO PUT TOGETHER A PANDORA[®] COMPLETE NECKLACE



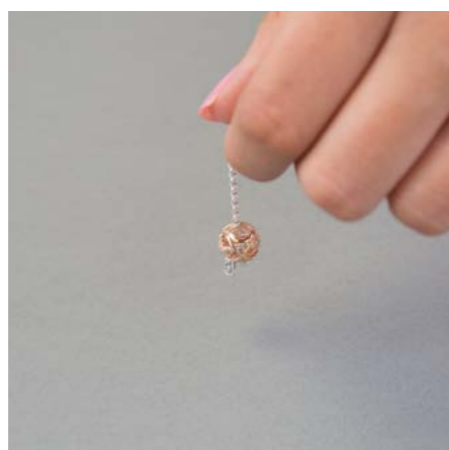
1 First, choose the charms and pendant you would like to wear on your PANDORA chain.



2 Start by threading the first charm onto the end of the chain that doesn't have the clasp. Please note that this first charm will be at the very top of your stack if you continue to add more.



3 Pull the bead along the chain until it is at the end near the clasp



4 The clasp will make sure your charm stays in position and doesn't slide off the end



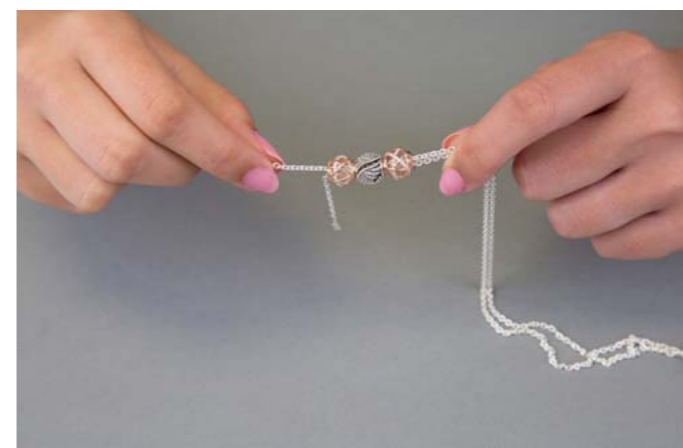
5 At this stage, add any other charms that you like to rest on top of your pendant



6 Next, add your pendant, but make sure you do not tread it all the way to the end



7 Holding the two ends, drop the chain that you started threading with through each bead



8 You will now have two chains running through the beads and both ends will be together



9 The beads will now drop into place on top of the pendant



You are now ready to wear your new PANDORA necklace creation

EXPLORE THE PANDORA[®] PETITE MEMORIES COLLECTION

In the Petite Memories collection there are 2 different lockets; the first is a medium sized locket and chain and the third is a large locket and chain; however, for the purpose of this guide we will be using the medium size locket and charm set.



1 To add your charms to your locket you must first take the locket off the chain



2 To open the locket, push your nail into the small indentation at the top outer edge



3 Once open you will be able to start adding your Petite Memories charms



4 The medium locket will only fit three Petite Memories charms; however the large pendant can fit a total of 5 charms.



5 After you have filled your locket simply close it until it is secure.



6 Now thread your locket back onto the chain.



7 You're now ready to wear your new Petite Memories locket and charms



This image shows the different lengths that are available in the small, medium and large lockets; however, each one can be shortened with the help of additional loops located near the clasp.

WWW. **thejewelhut** .CO.UK