

HOW TO ADD A SAFETY CHAIN TO YOUR PANDORA MOMENTS BRACELET

“PANDORA safety chains work as a great support mechanism to keep all of your charms on your bracelet, and your bracelet on your wrist. But how do you attach them correctly?”



The tools you will need.



1 Find the end of the safety chain with the rotating hinge attached. This will be the end that you will thread onto the bracelet first.



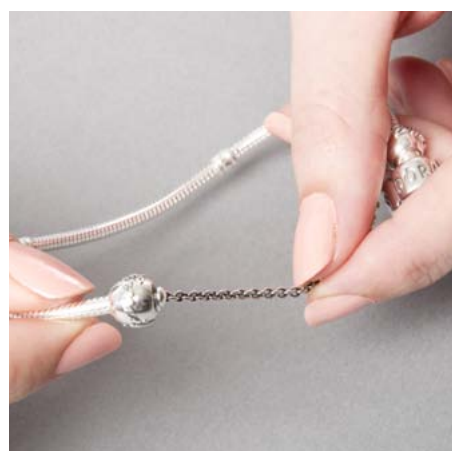
2 Once the bracelet is open, position the safety chain onto the end of the bracelet where the thread is visible.



3 Twist the safety chain onto the bracelet and past the threaded end.



4 Once the threading has started, the safety chain will not slide off.



5 Keep on threading the safety chain past the other two threaded markers.



6 Eventually you will come to the last threaded node, at this point you will want to thread the safety chain on until it cannot go any closer to the clasp.



7 Attach the second end of the safety chain onto the end of the bracelet. This will twist on exactly the same as the hinged end.



8 Place the end of the bracelet into the clasp and close firmly.



And finally, your charms and bracelet are now safe and secure on your wrist.